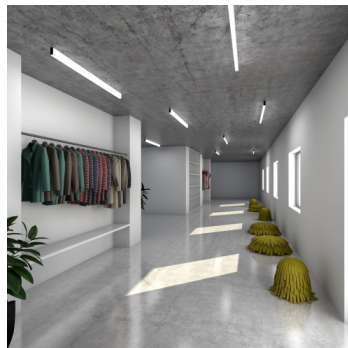


IZAR III I3.L3.1500.XY

Type: ceiling and wall lamp

Lampshade: acrylic glass, front white (.92) or black (.93)

Light body: white painted steel plate



| W | K | Module luminous flux lm | Luminaire luminous flux lm | A | B | C | DALI 2 | Motion sensor | Emergency module | Bluetooth | Track system | Weight g |
|------|------|-------------------------|----------------------------|------|----|----|--------|---------------|------------------|-----------|--------------|----------|
| 26,5 | 3000 | 3670 | 3372 | 1500 | 80 | 40 | M | - | P* | Q* | - | 3200 |

Lucis I3.L3.1500.X IZAR LED / LDC (Polar)

Voltage: 230V

IK code: IK06

Ballast: Driver

CRI: >90

LED life: L80/F10 50000 hours

Watt: 26,5 W

Color temperature: 3000 K

Module luminous flux: 3670 lm

Luminaire luminous flux: 3372 lm

A: 1500 mm

B: 80 mm

C: 40 mm

Dali 2: Available

Motion sensor: Not available

Emergency module: Available on inquiry

Bluetooth control: Available on inquiry

Track system: Not available

Sádrokarton: Not available

Weight: 3200 g

Luminaire: Lucis I3.L3.1500.X IZAR LED
Lamps: 1 x LED G6

