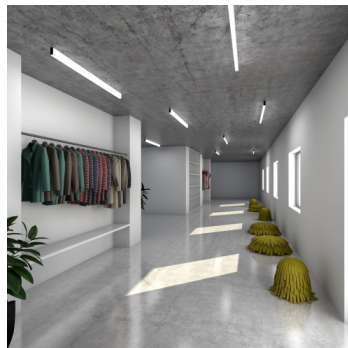


IZAR III I3.L4.1500.XY

Type: ceiling and wall lamp

Lampshade: acrylic glass, front white (.92) or black (.93)

Light body: white painted steel plate



W	K	Module luminous flux lm	Luminaire luminous flux lm	A	B	C	DALI 2	Motion sensor	Emergency module	Bluetooth	Track system	Weight
26,5	4000	3815	3504	1500	80	40	M	-	P*	Q*	-	3200

Lucis I3.L4.1500.X IZAR III LED / LDC (Polar)

Voltage: 230V

IK code: IK06

Ballast: Driver

CRI: >90

LED life: L80/F10 50000 hours

Watt: 26,5 W

Color temperature: 4000 K

Module luminous flux: 3815 lm

Luminaire luminous flux: 3504 lm

A: 1500 mm

B: 80 mm

C: 40 mm

Dali 2: Available

Motion sensor: Not available

Emergency module: Available on inquiry

Bluetooth control: Available on inquiry

Track system: Not available

Sádrokarton: Not available

Weight: 3200 g

Luminaire: Lucis I3.L4.1500.X IZAR III LED
Lamps: 1 x LED G6

