

POLARIS ZL ZL1.P3.400.XY

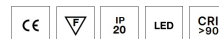
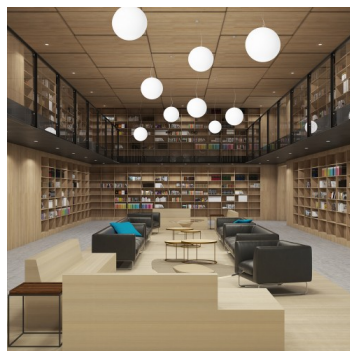
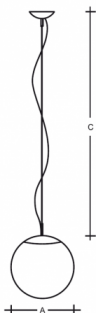
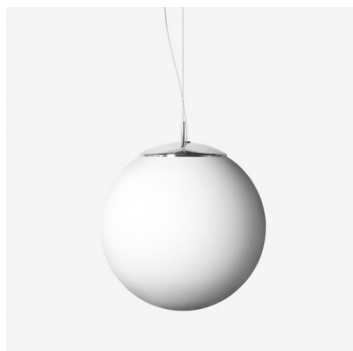
Type: suspension lamp

Lampshade: white, hand-blown, three-layered glass, satin opal matt

Metal parts: painted steel plate RAL 9003 (.31), RAL chrom (.77) or chrome (.80)

Pendant: steel wire suspension with a transparent cable

The luminaire driver is placed right inside the luminaire (LED version).



W	K	Module luminous flux lm	Luminaire luminous flux lm	A	C	DALI 2	Motion sensor	Emergency module	Bluetooth	Track system	Weight
37,3	3000	5640	5076	400	2000	M	-	P*	Q*	R*	5700

Lucis ZL1.P3.400.X POLARIS ZL LED / LDC (Polar)

Voltage: 230V

IK code: IK01

Ballast: Driver

CRI: >90

LED life: L80/F10 50000 hours

Watt: 37,3 W

Color temperature: 3000 K

Module luminous flux: 5640 lm

Luminaire luminous flux: 5076 lm

A: 400 mm

C: 2000 mm

Dali 2: Available

Motion sensor: Not available

Emergency module: Available on inquiry

Bluetooth control: Available on inquiry

Track system: Available on inquiry

Sádrokarton: Not available

Weight: 5700 g

Luminaire: Lucis ZL1.P3.400.X POLARIS ZL LED
Lamps: 1 x LED G6

