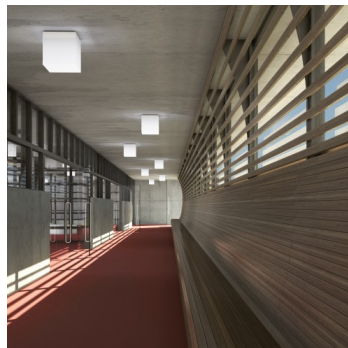
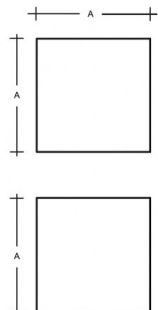


IZAR C IC.K2.330.X

Type: ceiling and wall lamp

Lampshade: acrylic glass, sides white (.91) or black (.93)

Light body: white painted steel plate



| W | K | Module luminous flux lm | Luminaire luminous flux lm | A | DALI 2 | Motion sensor | Emergency module | Bluetooth | Track system | Weight |
|----|------|-------------------------|----------------------------|-----|--------|---------------|------------------|-----------|--------------|--------|
| 26 | 4000 | 3488 | 2820 | 330 | M | - | P* | Q* | - | 3300 |

Voltage: 230V

IK code: IK06

Ballast: Driver

CRI: >90

LED life: L80/F10 50000 hours

Watt: 26 W

Color temperature: 4000 K

Module luminous flux: 3488 lm

Luminaire luminous flux: 2820 lm

A: 330 mm

Dali 2: Available

Motion sensor: Available

Emergency module: Available on inquiry

Bluetooth control: Available on inquiry

Track system: Available

Sádrokarton: Not available

Weight: 3300 g

Lucis IC.K2.330.X IZAR C LED / LDC (Polar)

Luminaire: Lucis IC.K2.330.X IZAR C LED
Lamps: 1 x LED D180-G5

