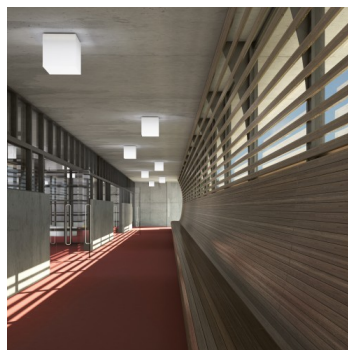
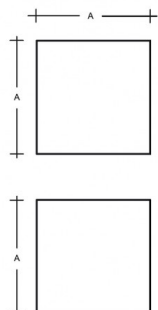


IZAR C IC.K2.440.X

Type: ceiling and wall lamp

Lampshade: acrylic glass, sides white (.91) or black (.93)

Light body: white painted steel plate



W	K	Module luminous flux lm	Luminaire luminous flux lm	A	DALI 2	Motion sensor	Emergency module	Bluetooth	Track system	Weight
37,7	4000	4659	3872	440	M	-	P*	Q*	-	7800

Voltage: 230V

IK code: IK06

Ballast: Driver

CRI: >90

LED life: L80/F10 50000 hours

Watt: 37,7 W

Color temperature: 4000 K

Module luminous flux: 4659 lm

Luminaire luminous flux: 3872 lm

A: 440 mm

Dali 2: Available

Motion sensor: Available

Emergency module: Available on inquiry

Bluetooth control: Available on inquiry

Track system: Available

Sádrokarton: Not available

Weight: 7800 g

Lucis IC.K2.440.X IZAR C LED / LDC (Polar)

Luminaire: Lucis IC.K2.440.X IZAR C LED
Lamps: 1 x LED 252/160-G5

