

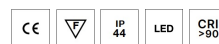
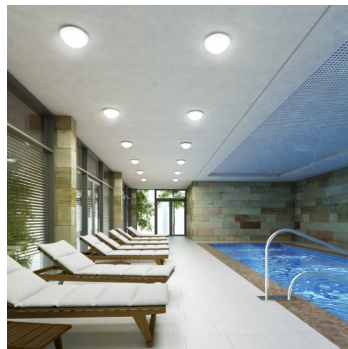
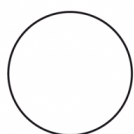
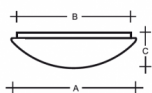
CHARON IP44 PS29.L2.T135.Y

Type: luminaire de plafond et mural

Abat-jour: verre blanc, soufflé de manière artisanale, à trois couches, satin opale mat

Luminaire: tôle en acier peint en blanc

Could be combined with metal ring in white, chrome, brass or stainless steel.



W	K	Module luminous flux lm	Luminaire luminous flux lm	A	B	C	DALI 2	Emergency	Bluetooth	Track system	Weight	
16	4000	2607	1774	360	290	130 Project 1	M	O*	-	0*	-	DIALUX 11.00.2024

Operator
Telephone
Fax
e-Mail

Tension: 230V

IK code: IK01

Ballaste: Driver

CRI: >90

La vie de LED: L80/F10 50000 heures

Watt: 16 W

Température Couleur: 4000 K

Module luminous flux: 2607 lm

Luminaire luminous flux: 1774 lm

A: 360 mm

B: 290 mm

C: 130 mm

Dali 2: Disponible

Capteur de mouvement: Disponible sur demande

Module d'urgence: Non disponible

Contrôle Bluetooth: Disponible sur demande

Track system: Non disponible

Sádrokarton: Non disponible

Poids: 2900 g

Lucis PS29.L2.T135 CHARON LED / LDC (Polar)

Luminaire: Lucis PS29.L2.T135 CHARON LED
Lamps: 1 x LED G6

